



# Division of Environmental Sciences

## Environmental Studies Program

Rodney E. Cluck, Ph.D.  
Chief, Division of Environmental Sciences

# Environmental Studies Program

## ESP Mission



To provide the information needed to predict, assess, and manage impacts from offshore energy and marine mineral exploration, development, and production activities on human, marine, and coastal environments.



# Environmental Studies Program

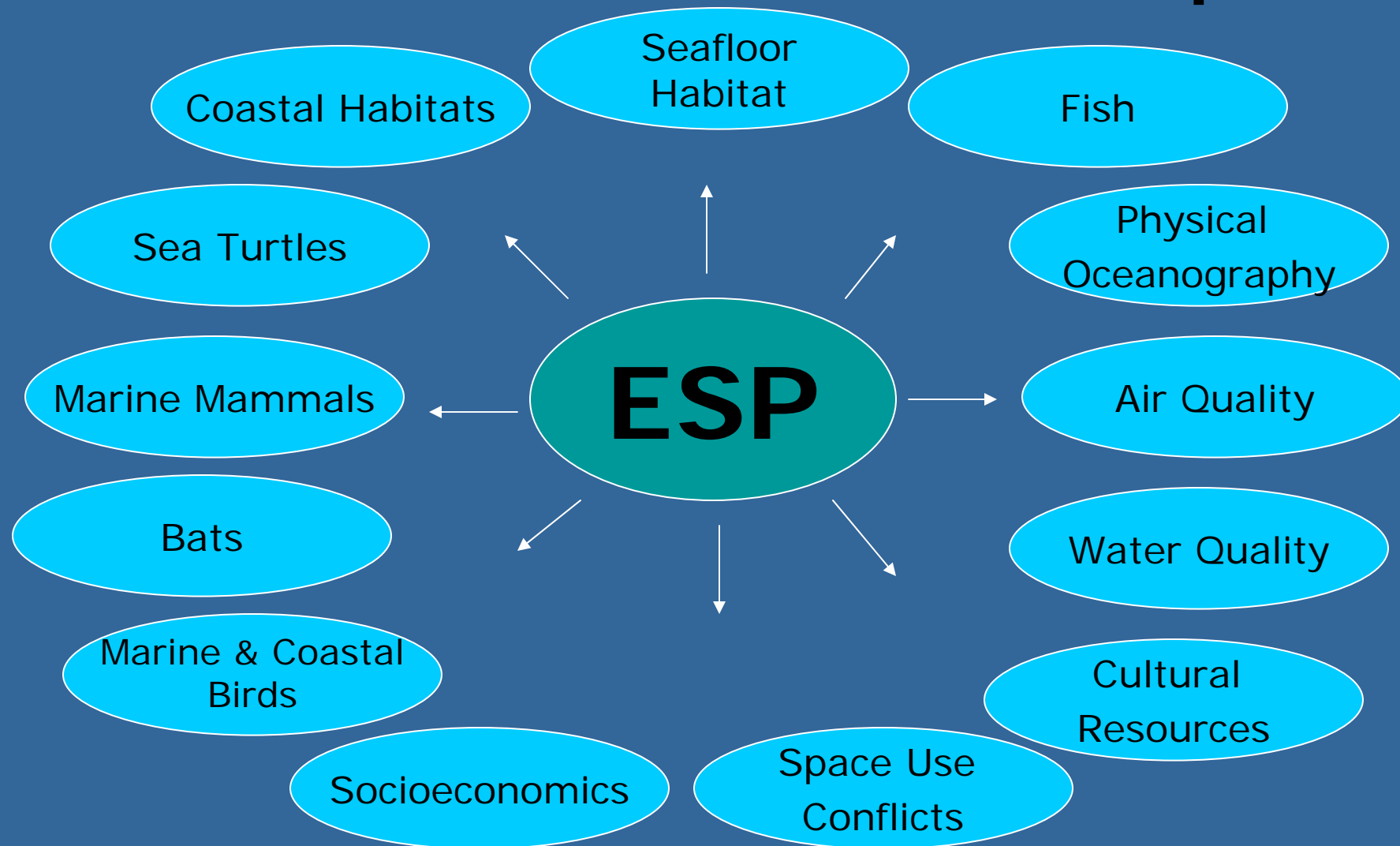
- Initiated in 1973 to support the U.S. DOI offshore oil and gas leasing program.
- Statutory authorization derived primarily from the OCSLA and EPOA of 2005 which gave BOEM authority to regulate OCS Renewable energy projects.
- Section 20 of the OCSLA authorizes the ESP and establishes three general goals for the program...

# Environmental Studies Program

## GOALS

- 1) Establish the information needed for assessment and management of environmental impacts
- 2) Predict impacts on the marine biota; and
- 3) Monitor human, marine, and coastal environments

# Resources and Research Topics



# Determining Priorities

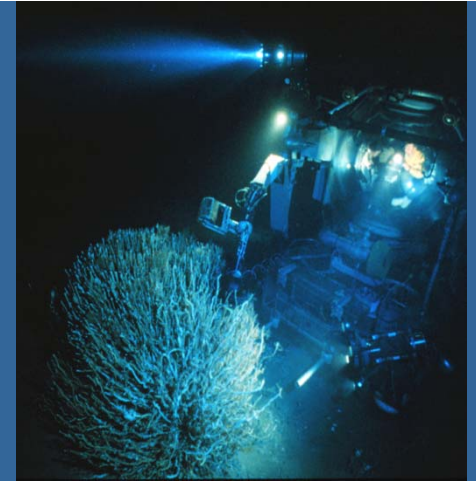
- Mission relevance
- Scientific merit
- Technically feasible
- Timing
- Applicability
- Affordable



## OCS Scientific Committee (OCS SC)

- Federal Advisory Committee (FACA).
- Advises BOEM on the feasibility, appropriateness, and scientific value of the information provided by the ESP.
  - Participates in an annual meeting to review Studies Development Plans.
  - Includes specific sub-committees.

# Funding Research



- **Competitive Contracts**
- **Inter-Agency Agreements**

**Partnering** NOPP; NOAA; ONR; NASA; NSF;  
USGS; FWS; NPS; DOE; etc.

- **Cooperative Agreements**
  - Coastal Marine Institutes (CMI)
  - Cooperative Ecosystem Studies Units (CESU)

# ESP Information Sharing

- Environmental Studies Program Information System (**ESPIIS**)
- Multipurpose Marine Cadastre (**MMC**)
- Professional Journal Publications
- BOEM Ocean Science
- BOEM Hosted Meetings & Workshops
- Participation and Sponsorship of Symposia and Conferences
- Education and Outreach



# Use of Study Results

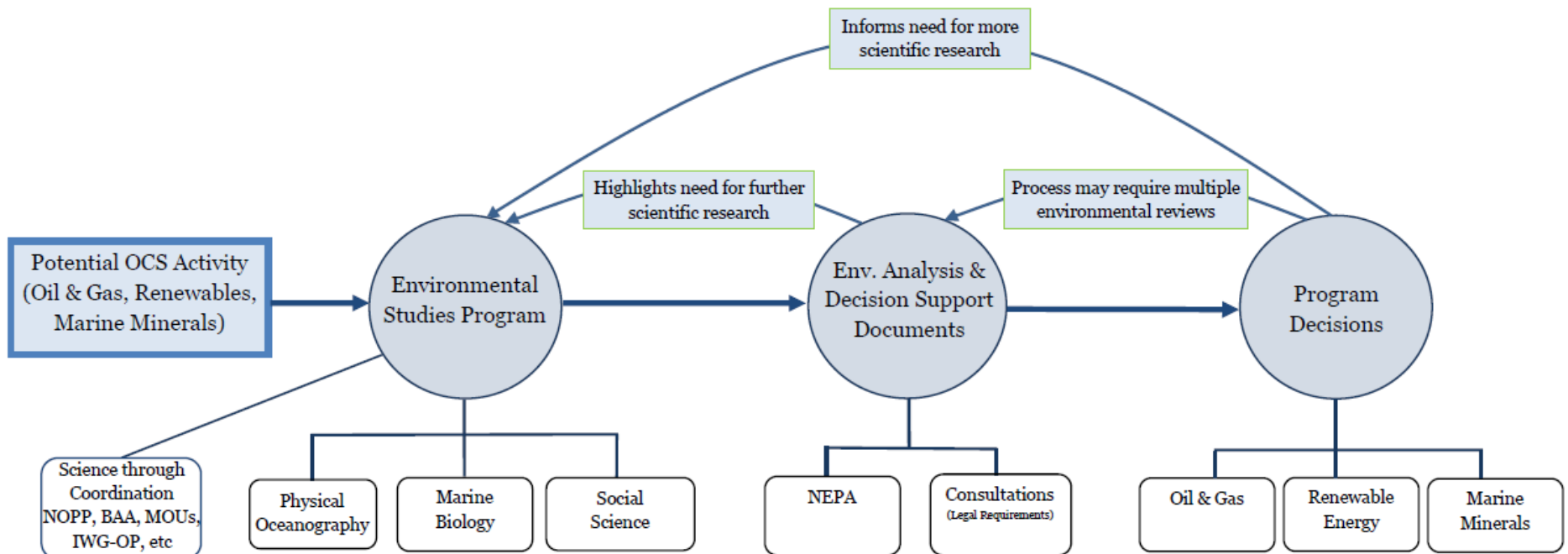
## Internal

- NEPA Analyses
- Input to BOEM Models
  - OSRA, Econ
- Developing Mitigations
  - NTL Development and Modification
- Directing future research

## External

- **Statutory Requirements**
  - Endangered Species Act
  - Clean Air Act
  - Clean Water Act
  - Oil Pollution Act
  - Marine Mammal Protection Act
  - Magnuson-Stevens Fishery Conservation and Management Act
  - National Historic Preservation Act
  - Coastal Zone Management Act
  - And.....

# Applied Science for Informed Decisions



# Program Quality

- Information needs reviewed internally/externally
- OCS Scientific Committee
- External participation on proposal reviews
- Scientific/Quality Review Boards
- Peer reviewed literature
- OMB P.A.R.T *Review*

# Take Home Messages

- The ESP is Mission-focused
- Clear Goals & Clear Strategy
- Highly Participatory
- Frequent Internal & External Review
- Coordination, Collaboration, and Leveraging
- Quality Science for Bureau Mission
- The Landscape is Continually Evolving

[Rodney.Cluck@boem.gov](mailto:Rodney.Cluck@boem.gov)

703-787-1087